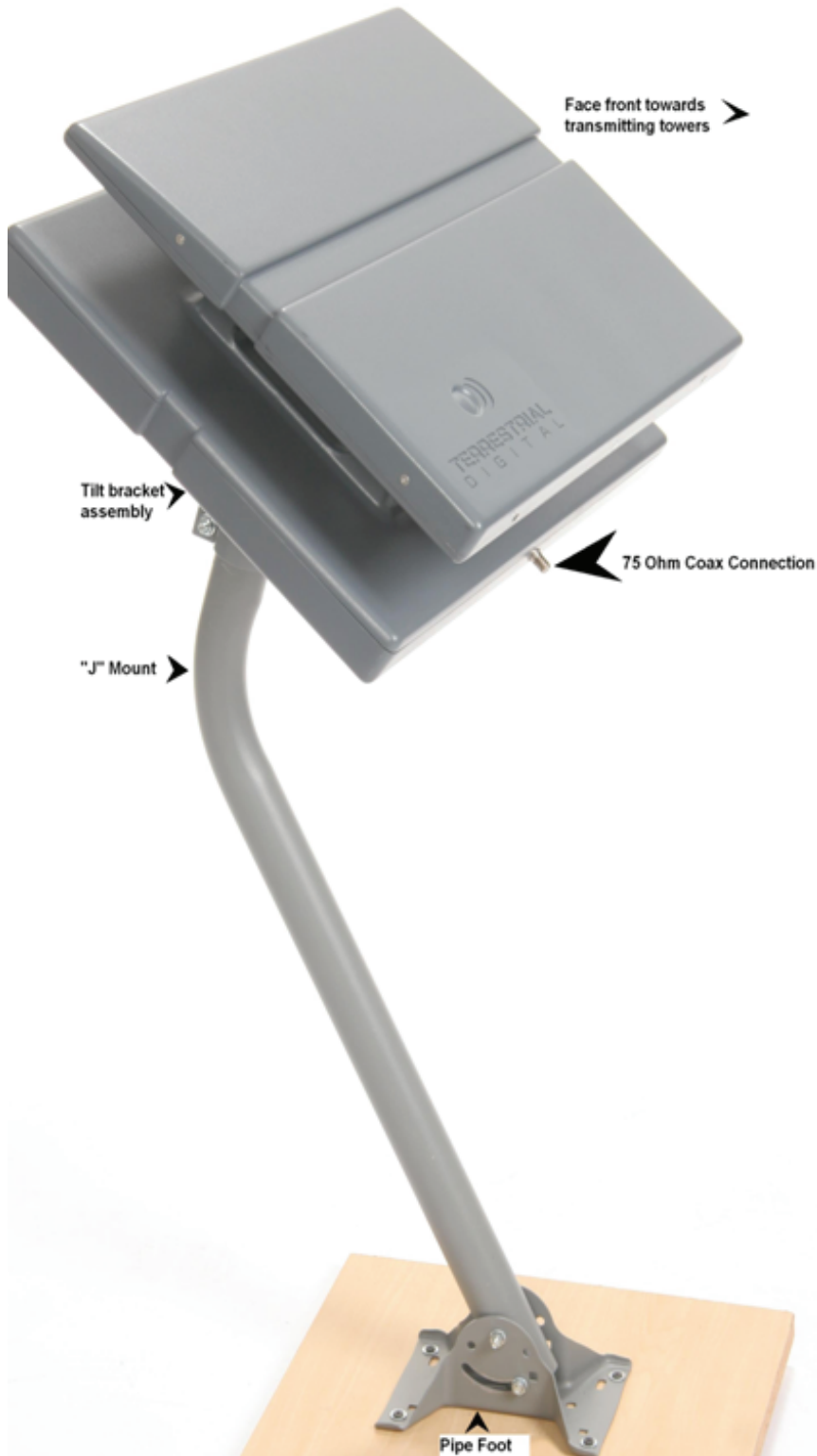


## Lacrosse HDTV Antenna Assembly Instructions



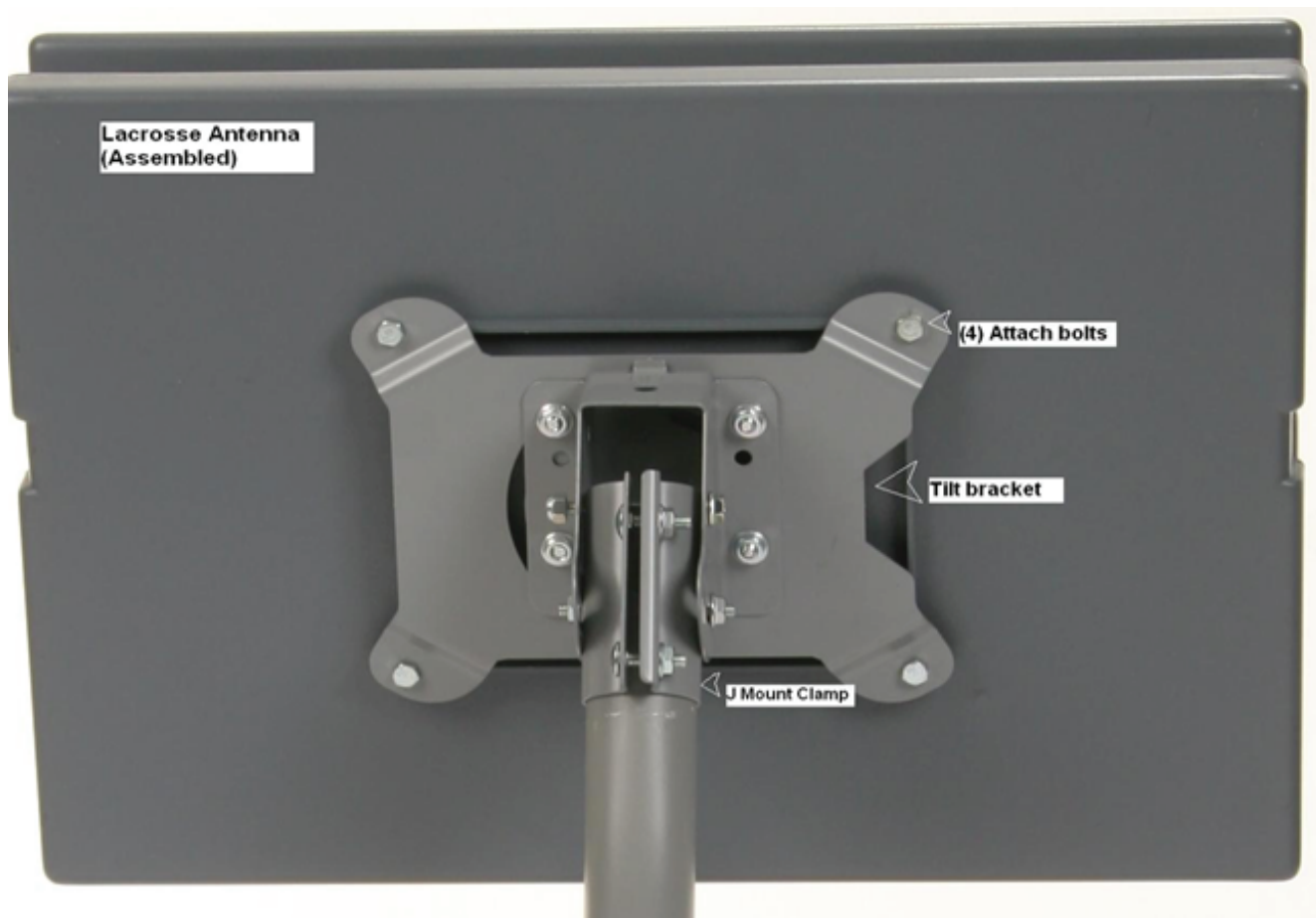
The Lacrosse HDTV antenna is optimized for digital reception. It has its greatest performance on the UHF band (ch 14-69) where most of the digital stations are broadcast. It will also have capability on upper VHF (7-13) channels as well.

The Lacrosse has very flexible aiming characteristics with an average beam-width of 90 degrees.

### Assembly

1. Connect coax cable to connection on bottom of antenna
2. Attach pipe and foot where you plan on installing the antenna

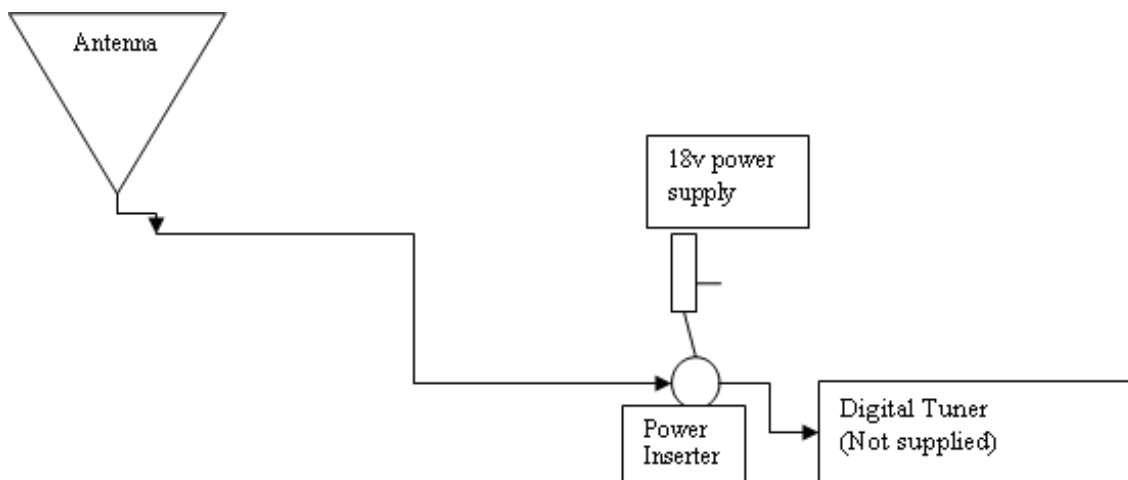
3. Attach tilt bracket assembly to back of antenna using screws provided (as shown)



### Built in Amplifier (Amplified version only)

Disregard this step if you have the non amplified version. On the Lacrosse A, There is a built-in low noise pre amplifier. You do not need to run electricity to the antenna. Power comes from an external power inserter (supplied). The power inserter supplies 18volts to the antenna via regular coax cable

Connect the power inserter to the antenna where it says "To booster" then connect the power inserter to your digital tuner via "to TV" output.



**Warning to reduce the risk of fire or electrical shock, do not expose power inserter to rain or moisture.**

## Installation Tips

- Keep in mind since most digital TV signals are broadcast on higher frequencies, they are more easily blocked by solid objects. Installing the antenna so you have a clear shot in the direction of the transmitting towers will improve your chances for success.
- Installing the antenna in your attic will reduce your signal strength by about 50%
- Splitters, diplexers and cable runs over 100 feet can cut your signal strength significantly. Avoid these at least until you have established you have a lock on your digital signals.



**Caution! Risk of electrical shock. Do not open!**



**Caution! Dangerous voltage inside enclosure. To reduce Risk of electrical shock Do not remove cover, No use -serviceable parts inside. Refer servicing to qualified personnel.**



**Warning! Installation of this antenna near power lines is dangerous. For your safety, Follow these installation instructions.**

