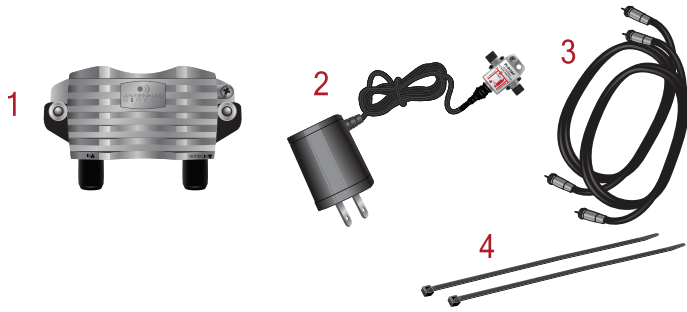


JUICE™ UHF/VHF Antenna Preamplifier System

Before beginning assembly, make sure all pieces needed are present.



The JUICE™ comes with:

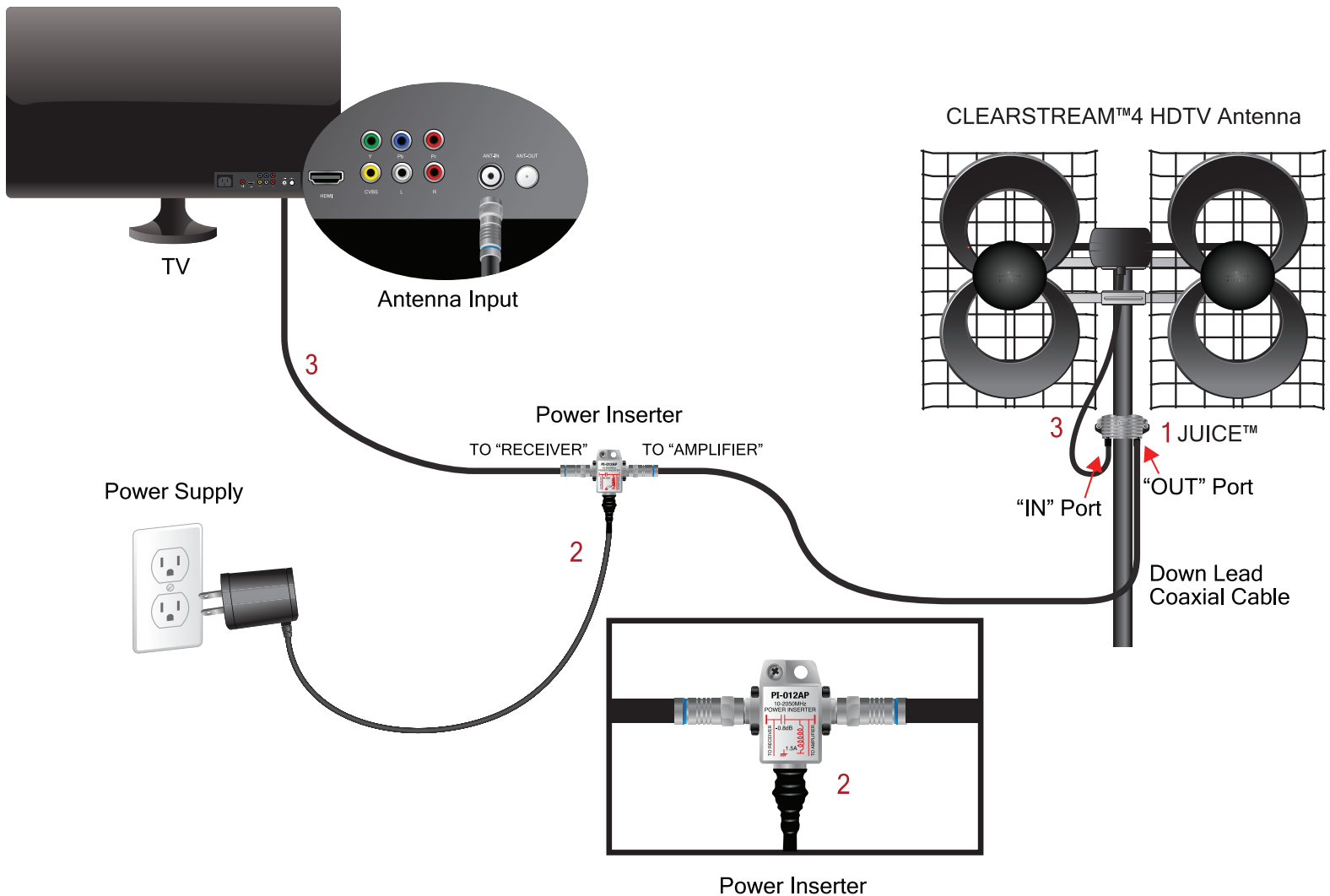
- 1) JUICE™ UHF/VHF Preamplifier with Weatherproof Housing
- 2) Low Loss Power Inserter with 12v DC Power Supply
- 3) 2- 3ft Weatherproof Coaxial Cables
- 4) 2 - Zip Ties

Installation Instructions:

1. If your antenna is already installed, disconnect the down lead coaxial cable from the antenna's transformer to the TV/converter box.
2. Connect one of the provided 3ft Coaxial Cables (3) to the antenna's transformer as shown below (the antenna may look different, but the cable connection will be the same.) Connect the other end of the 3ft Coaxial Cable (3) to the JUICE™ (1) using the "IN" port.
3. Strap the JUICE™ (1) to the antenna mast below or behind the antenna using the provided Zip Ties (4).
4. Attach the down lead coaxial cable (sold separately) to the "OUT" port on the JUICE™ (1).
5. Connect the opposite end of the down lead cable to the "TO AMPLIFIER" on the Power Inserter (2).
6. Attach the other provided 3ft Coaxial Cable to the left port labeled "TO RECEIVER" on the Power Inserter (2). Then, connect the other end of the 3ft Coaxial Cable (3) to your TV/converter box.

Note: The Power Inserter sends power up the down lead to drive the Preamplifier mounted on or near the antenna. The Power Inserter can be located anywhere in your house, but it is usually near the TV. You can use a longer cable to place the Power Inserter in a different location.

7. Insert the Power Supply (2) into a wall outlet or power strip. Verify the green LED light is on.



Preamplifier Regulatory Notice:

This device complies with part 15 of the FCC Rules. Operation is subject to the following two conditions.

- (1) This device may not cause harmful interference, and (2) this device must accept any interference received, including interference that may cause undesired operation.

This equipment has been tested and found to comply with the limits for a Class B Digital Device, pursuant to Part 15 of the FCC Rules. These limits are designed to provide reasonable protection against harmful interference in a residential installation.

This equipment generates, uses, and can radiate radio frequency energy and, if not installed and used in accordance with the instructions, may cause harmful interference to radio communication. However, there is no guarantee interference will not occur in a particular installation.

If this equipment does cause harmful interference to radio or television reception, which can be determined by turning the equipment off and on, the user is encouraged to try to correct the interference by one of more of the following measures:

1. Reorient or relocate the antenna.
2. Increase the separation between the equipment and converter box
3. Connect the equipment into an outlet on a different circuit from which the converter box is connected.



Call to Learn.
Toll-Free Helpline: **1-877-825-5572**

Technical Assistance is available Monday – Friday, 9:00 am to 7:00 pm
and Saturday – Sunday, 10:00 am to 6:00 pm, Central Time.



Find TV Channels
Aim Your Antenna

FREE
Antenna Point app

or go to antennapoint.com



Warning! Keep Away
from Power Lines.

Model # JUICE
11.2019