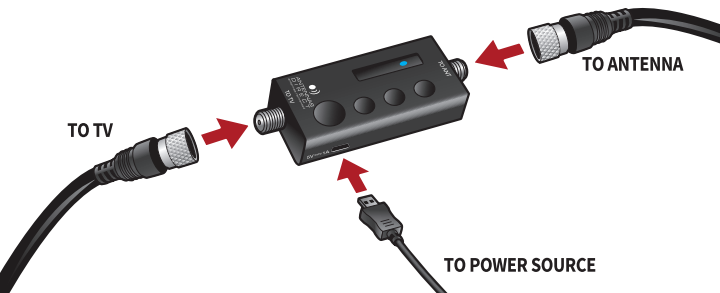


# CLEARSTREAM™

## Indoor In-Line Amplifier

Boost Signal Strength for Reliable Reception



1. Connect one end of the Coaxial Cable to the antenna and then thread the other end of the Coaxial Cable from the antenna onto the “TO ANT” connector on the In-Line Amplifier.
2. Thread the provided 3 ft. Coaxial Cable into the In-Line Amplifier connector labeled “TO TV”, and thread the opposite end into the “Antenna Input” on your TV/converter box.
3. Connect the USB Cable into the In-Line Amplifier. You have the option to connect the cable into a USB port on your TV for power or use the USB Power Adapter and then plug the adapter into a power outlet. Verify the blue LED light is on.
5. Perform a channel scan on your TV/converter box.

### Helpful Tips:

Be ready to experiment with various locations in your home. The best option is usually on a window or wall facing the broadcast towers. Remember to rescan for channels in every location. Use a longer cable, if necessary, to extend the provided coaxial cable. You can purchase extra cable and a coaxial coupler to connect the two cables at your local hardware store.



**Call to Learn.**

**Toll-Free Helpline: 1-877-825-5572**

**Technical Assistance is available** Monday – Friday, 9:00 am to 7:00 pm and Saturday – Sunday, 10:00 am to 6:00 pm, Central Time.

**Amplifier Regulatory Notice:** This device complies with part 15 of the FCC Rules. Operation is subject to the following two conditions.

- (1) This device may not cause harmful interference, and
- (2) this device must accept any interference received, including interference that may cause undesired operation.

This equipment has been tested and found to comply with the limits for a Class B Digital Device, pursuant to Part 15 of the FCC Rules. These limits are designed to provide reasonable protection against harmful interference in a residential installation.

This equipment generates, uses, and can radiate radio frequency energy and, if not installed and used in accordance with the instructions, may cause harmful interference to radio communication. However, there is no guarantee interference will not occur in a particular installation.

If this equipment does cause harmful interference to radio or television reception, which can be determined by turning the equipment off and on, the user is encouraged to try to correct the interference by one of more of the following measures:

1. Reorient or relocate the antenna.
2. Increase the separation between the equipment and converter box
3. Connect the equipment into an outlet on a different circuit from which the converter box is connected

## Model # FLA-1-USB