

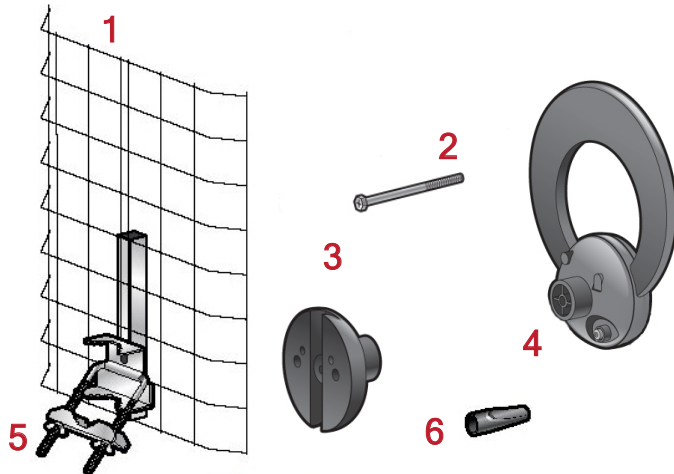
## CLEARSTREAM 1™

**Before attaching the antenna to any surface, TEST RECEPTION in that area.**

Connect the antenna to the TV or receiver and run a full channel scan.  
If reception is not as desired, move the antenna and run a full channel scan.

Tools required: Medium cross point screwdriver, power drill and 7/32" drill bit and coax cable.

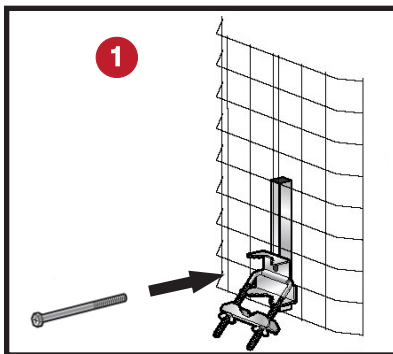
Before beginning assembly, make sure all pieces needed are present.



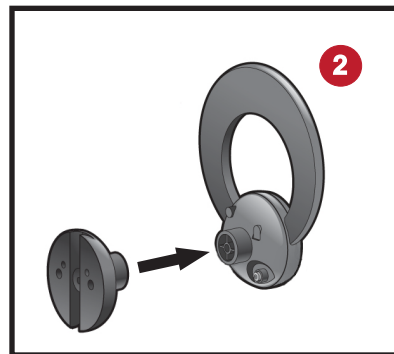
The ClearStream1™ comes with:

- 1) Reflector with bar and adjustable mast clamp
- 2) 4 $\frac{5}{8}$ " Threaded Bolt
- 3) Loop Element Base
- 4) Loop Element
- 5) Mast Clamp assembly
- 6) Weather Boot (optional)

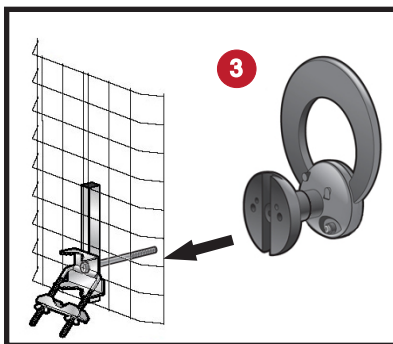
### Outdoor Roof Mount



1. Feed the 4 $\frac{5}{8}$ " threaded bolt (2) through the mast clamp assembly (5).



2. Fit the loop base (3) to the loop element (4).



3. Attach the assembled antenna onto the reflector (1) by inserting the threaded bolt (2) into the loop element base (3). Tighten bolt. Attach coax cable to loop element.

4. Loosen mast clamp wing nuts enough to slide mast between mast clamps.  
Note: mast sold separately.
5. Test Reception - Before attaching to any surface, test reception in that area. Connect the antenna to the TV or receiver and run a full channel scan. If reception is not as desired, move the antenna and rescan TV/receiver.

**Call Our HELP LINE at 877-825-5572**

One of our specialists can talk you through any problems you may have.

