

8.5"

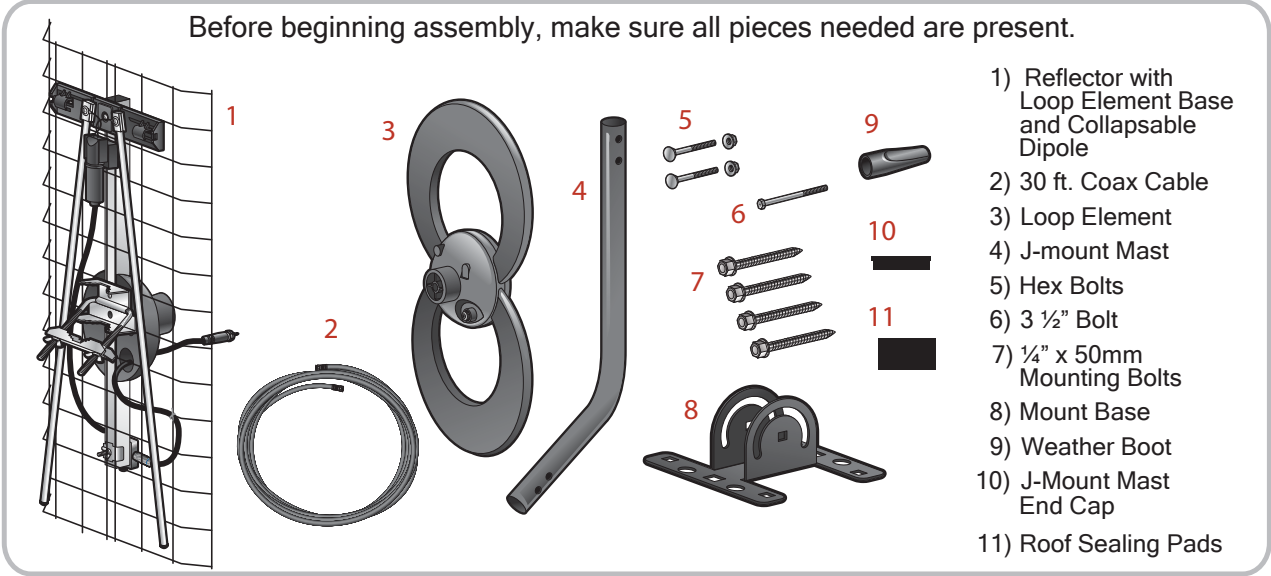
Quick Start Assembly/Installation Instructions

CLEARSTREAM 2™ COMPLETE

Before attaching the antenna to any surface, TEST RECEPTION in that area.

Connect the antenna to the TV or receiver and run a full channel scan.
If reception is not as desired, move the antenna and rescan TV/receiver.

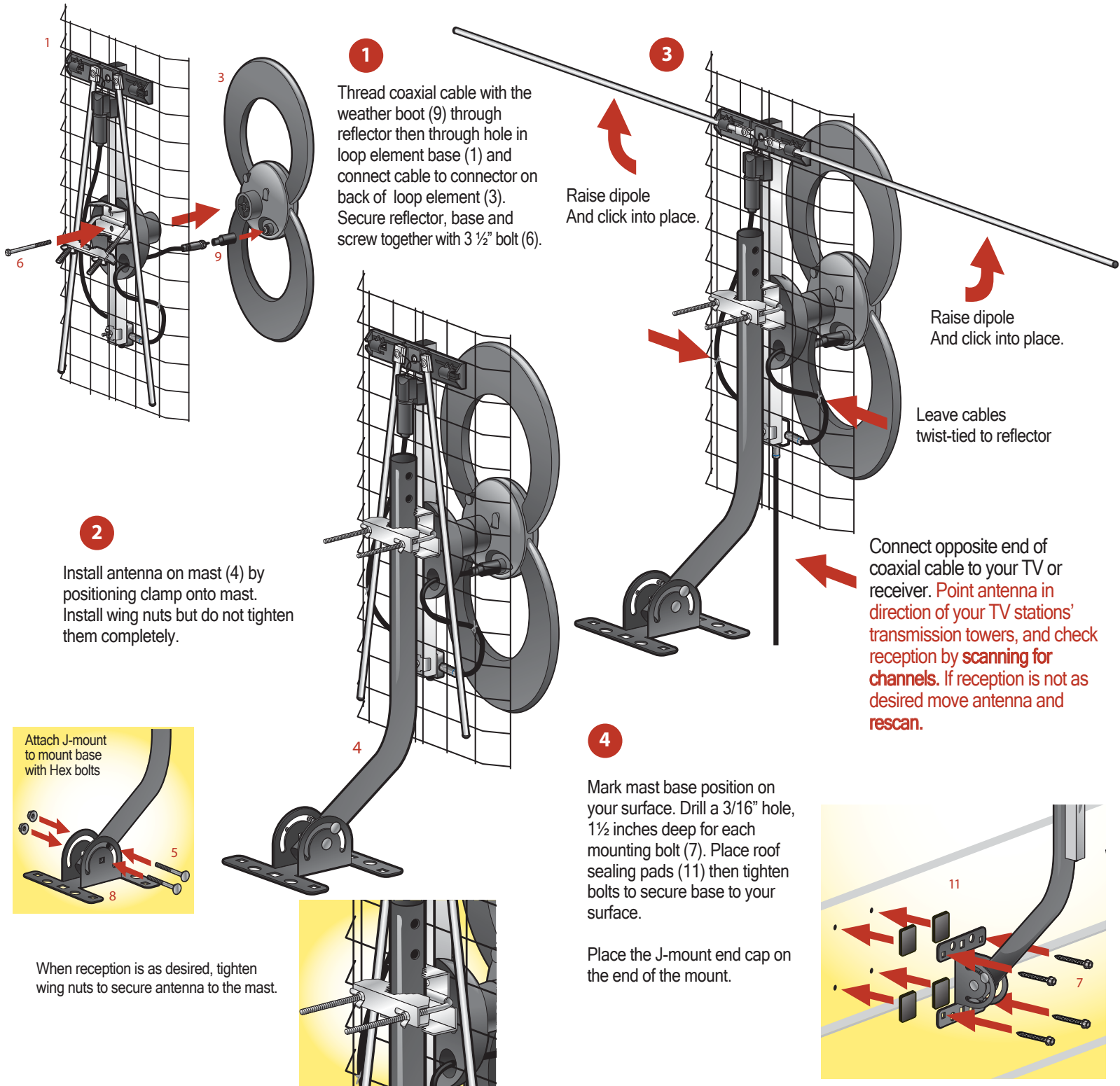
Before beginning assembly, make sure all pieces needed are present.



Outdoor Roof Mount

Tools Required: Adjustable Wrench, Power Drill, 3/16" Drill Bit, 8 and 10mm Ratcheting Drivers' Medium-sized Cross Point Screwdriver.

14"



Call to Learn. Technical Assistance is available Monday - Friday, 9am - 9pm Central Time
1-877-825-5572 and Saturday - Sunday, 10am - 6pm.